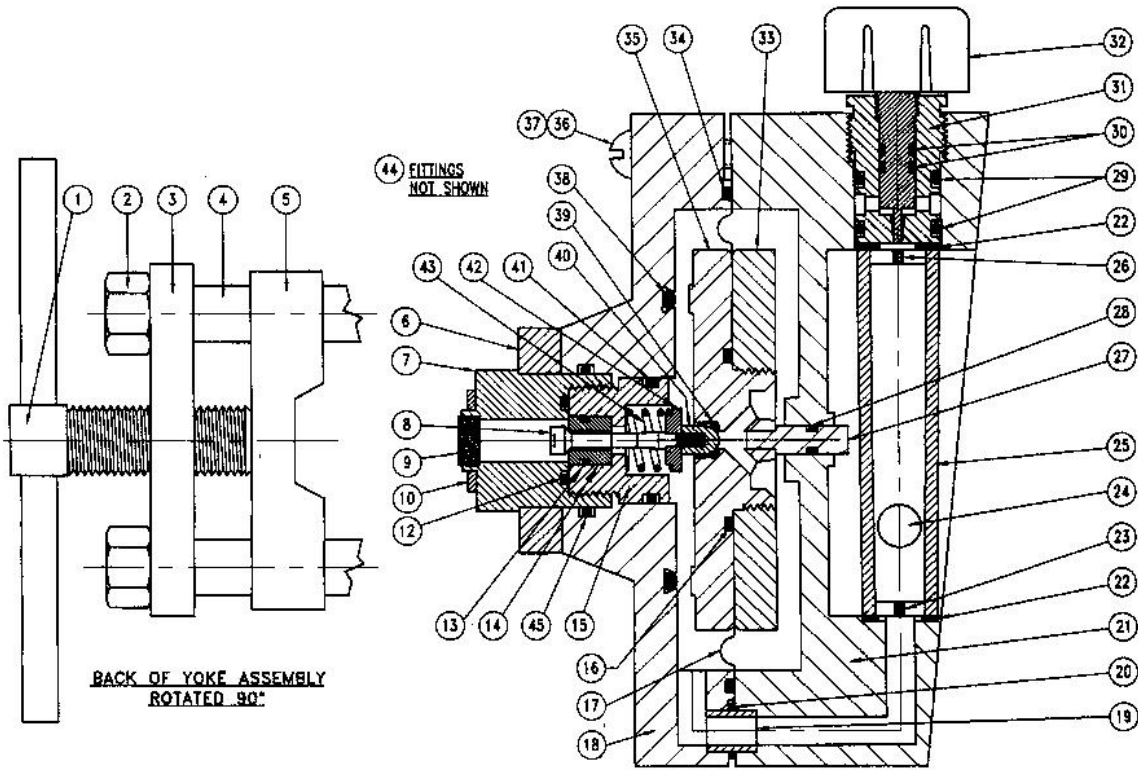


DRAWING NO. A-820
Chlorinator Parts List - Model 210
Max. Capacity: 100 PPD (2000 Gm./Hr.)



Ref. No.	Part No.	Quantity	Description	Ref. No.	Part No.	Quantity	Description
1	Y-260	1	Yoke Screw	25	-	1	Metering Tube
2	Z-210	2	Yoke Jam Nut	26	-	1	Upper Float Stop
3	Y-210	1	Yoke Rod Bar	-	A-210 *	1	Metering Tube Assem. (Includes Ref. No. 22 Thru26)
4	Y-220	2	Yoke Stud	27	-	1	Indicator-Part of BA-241
5	Y-230	1	Yoke Slide Bar	28	S-301	1	Indicator Seal
6	Y-240 **	1	Yoke Body Bar	29	S-404	2	Rate Valve Seat Seal
7	Y-252 **	1	Inlet Adapter	30	S-302 *	2	Rate Valve Stem Seal
-	A-200	1	Yoke Assembly (Includes Ref No 1 thru 7)	31	RV-210 *	1	Rate Valve Seat
8	YV-230	1	Inlet Valve Plug	32	RV-220 *	1	Rate Valve Plug Assembly
9	Y-275	1	Filter	33	BA-250	1	Diaphragm Front Plate
10	G-201	1	Lead Gasket	34	S-408	1	Diaphragm Body Seal
12	S-404	1	Adapter Face Seal	35	BA-241	1	Diaphragm Back Plate (Includes Ref. No. 27)
13	S-402	1	Valve Seat Seal	36	Z-220	4	Body Screw 1 1/2" Lgth.
14	YV-210	1	Inlet Valve Seat	37	Z-230	2	Body Screw 2 1/2" Lgth.
15	YV-220	1	Inlet Adapter Plug	38	S-409	1	Vacuum Seal
16	S-407	1	Diaphragm Plate Seal	39	S-401	1	Vent Seal
17	B-230	1	Diaphragm	40	YV-250	1	Vent Plug
18	BA-210	1	Back Body	41	S-406	1	Adapter O.D. Seal
19	B-280	1	Body Seal Tube	42	YV-240	1	Spring Guide
20	S-403	1	Body Seal	43	YV-260	1	Inlet Spring
21	BA-220	1	Front Body	44	Z-250	2	Vacuum Fitting- 3/8" OD Tube x 1/4 NPT
22	G-202	2	Metering Tube Gaskets	45	S-413	1	Back Body Inlet Seal
23	-	1	Lower Float Stop				
24	-	1	Metering Float				

NOTES:

1. Include Chlorinator Serial Number and Capacity on Order.
- * 2. For Model 210-1, Ref. No 30, 31, 32 are Replaced by RV-211 Plug,
A-210 Metering Tube Assembly is Replaced by Z-260 Plain Glass Tube.
- ** 3. Y-240 and Y-252 only available assembled together = A-201 Assembly.